

Sugar Hill Fire & Rescue



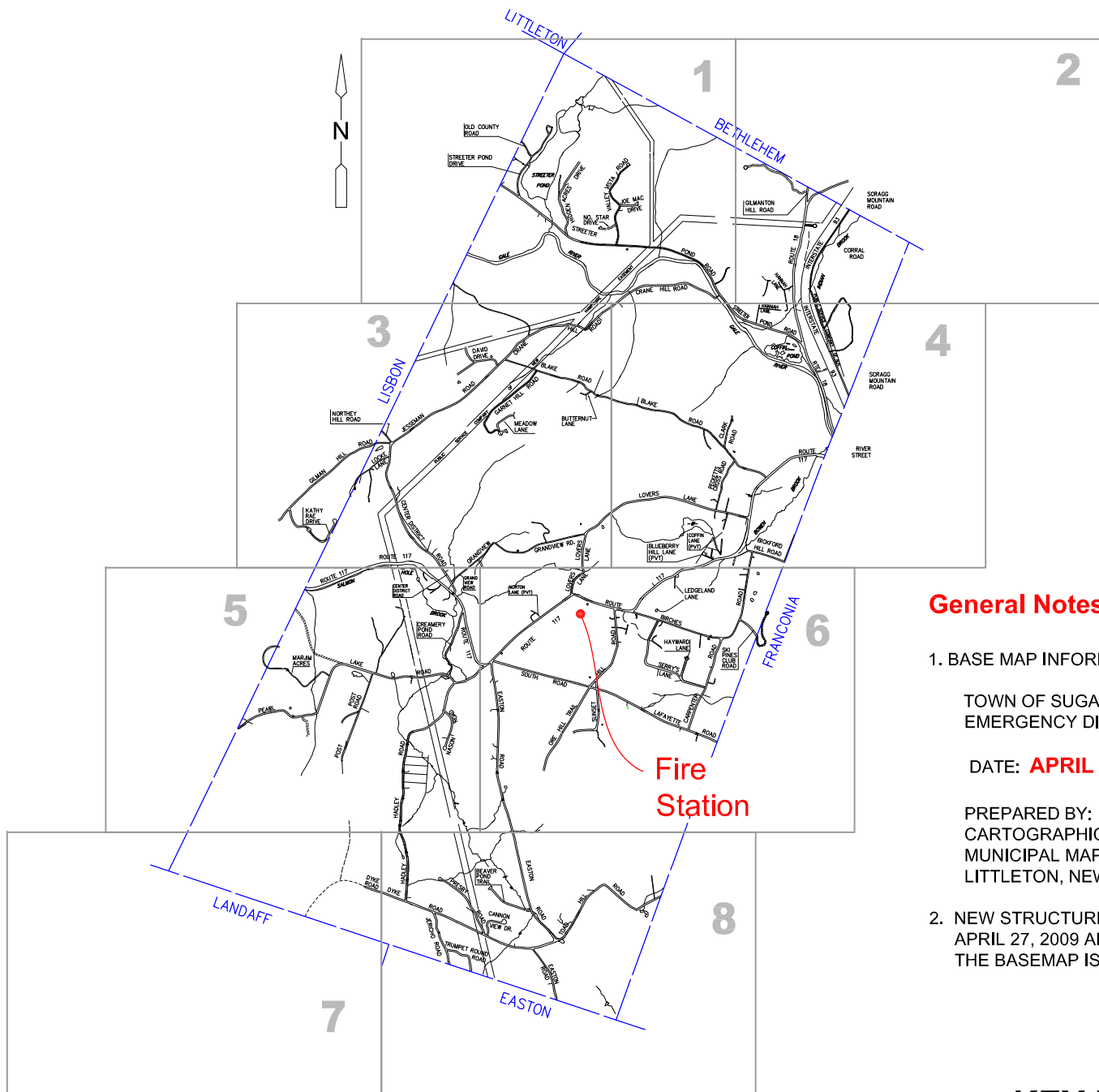
Emergency Dispatch Maps

Last updated June 2009



Sugar Hill Fire & Rescue
1147 Route 117
Sugar Hill, New Hampshire

<u>Road Name</u>	<u>Map Page</u>	<u>Road Name</u>	<u>Map Page</u>
B Beaver Pond Trail	8	L Lafayette Road	6
Bickford Hill Road	4	Ledgeland Land	6
Birches Road	4, 6	Locke Lane	3
Blake Road	3, 4	Lovers Lane	3, 4, 6
Blueberry Hill Lane	4	M Marjim Acres	5
Butternut Lane	3	Meadow Lane	3
C Carpenter Road	6	N Nason Road	5
Center District Road	3, 5	North Star Drive	1
Clark Road	4	Norton Lane	6
Coffin Lane	4	O Old County Road	1
Corral Road	2	Old Dyke Road to Landaff	7
Crane Hill Road	1, 3	Ore Hill Trail	6
Creamery Pond Road	5	P Pearl Lake Road	5
D David Drive	3	Pecketts Cross Road	4
Dyke Road	7, 8	Post Road	5
E Easton Road	6, 8	Presby Road	8
G Garnet Hill Road	3	R River Street	4
Gilman Hill Road	3	Route 117	4, 5, 6
Gilmanton Hill Road	2	Route 18	2, 4
Grandview Road	3, 5	S Scragg Mountain Road	2, 4
H Hadley Road	5, 8	Ski Pines Club Road	6
Hannah Lane	2	South Road	6
Hayward Lane	6	Streeter Pond Drive	1
Hidden Acres Drive	1	Streeter Pond Drive Extension	1
I Interstate 93	2, 4	Streeter Pond Road	1, 4
J Jericho Road	8	Sunset Hill Road	6
Jesseman Road	3	T Toad Hill Road	8
Joe Mac Drive	1	Trumpet Round Road	8
K Kathy Rae Drive	3	V Valley Vista Road	1



General Notes:

1. BASE MAP INFORMATION OBTAINED FROM DRAWING FILE TITLED:

TOWN OF SUGAR HILL
EMERGENCY DISPATCH MAP

DATE: **APRIL 27, 2009**

PREPARED BY:
CARTOGRAPHIC ASSOC., INC.
MUNICIPAL MAPPING CONSULTANTS
LITTLETON, NEW HAMPSHIRE

2. NEW STRUCTURES AND ROADS CONSTRUCTED AFTER
APRIL 27, 2009 ARE NOT SHOWN ON THE MAPS.
THE BASEMAP IS UPDATED ANNUALLY BY CARTOGRAPHIC ASSOC.

KEY MAP AND GENERAL NOTES

SHFD Water Sources

PRIMARY WATER SOURCES MOST COMMONLY USED

<i>Map Book Location No.</i>	<i>COMMON NAME</i>	<i>TYPE</i>	<i>Map Book Page</i>	<i>LOCATION</i>
1	Fire Station Pond	Pond (Dry Hydrant)	6	At Fire Station
2	Church Pond	Pond	6	Intersection of Rt 117 & Birches Road
3	Birches Road-Funfield	Pond (Dry Hydrant)	6	On Birches Road past Funfield Estate on Rt
4	Alloo Pump Site	Pond (Dry Hydrant)	5	On Pearl Lake Rd just past #322
5	Pinney Pump Site	Wet Hydrant	3	Center District Rd across from #321 and beyond (Freezes in Winter)
6	Toad Hill Pond	Pond (Dry Hydrant)	8	Intersection of Toad Hill Rd & Easton Rd. (To be constructed in 2009)
7	Coffin Pond	Pond	4	100 Yds on left off Rt 18 onto Streeter Pond Rd
9	Rt 18	River	4	At intersection of Rt 18 & Rt 117 @ bridge
12	Streeter Pond	Pond	1	At Boat launch on Streeter Pond
13	Coffin Pond	Pond	4	At turn-out on RT 18
16	Pearl Lake Road	Pond	5	On left side of Driveway #523 off Pearl lake Rd
20	Lipson Estate	Pond	3	At 258 Grandview road
25	David Drive	Pond	3	Off Crane Hill Rd 50' off right side 150 yds. in

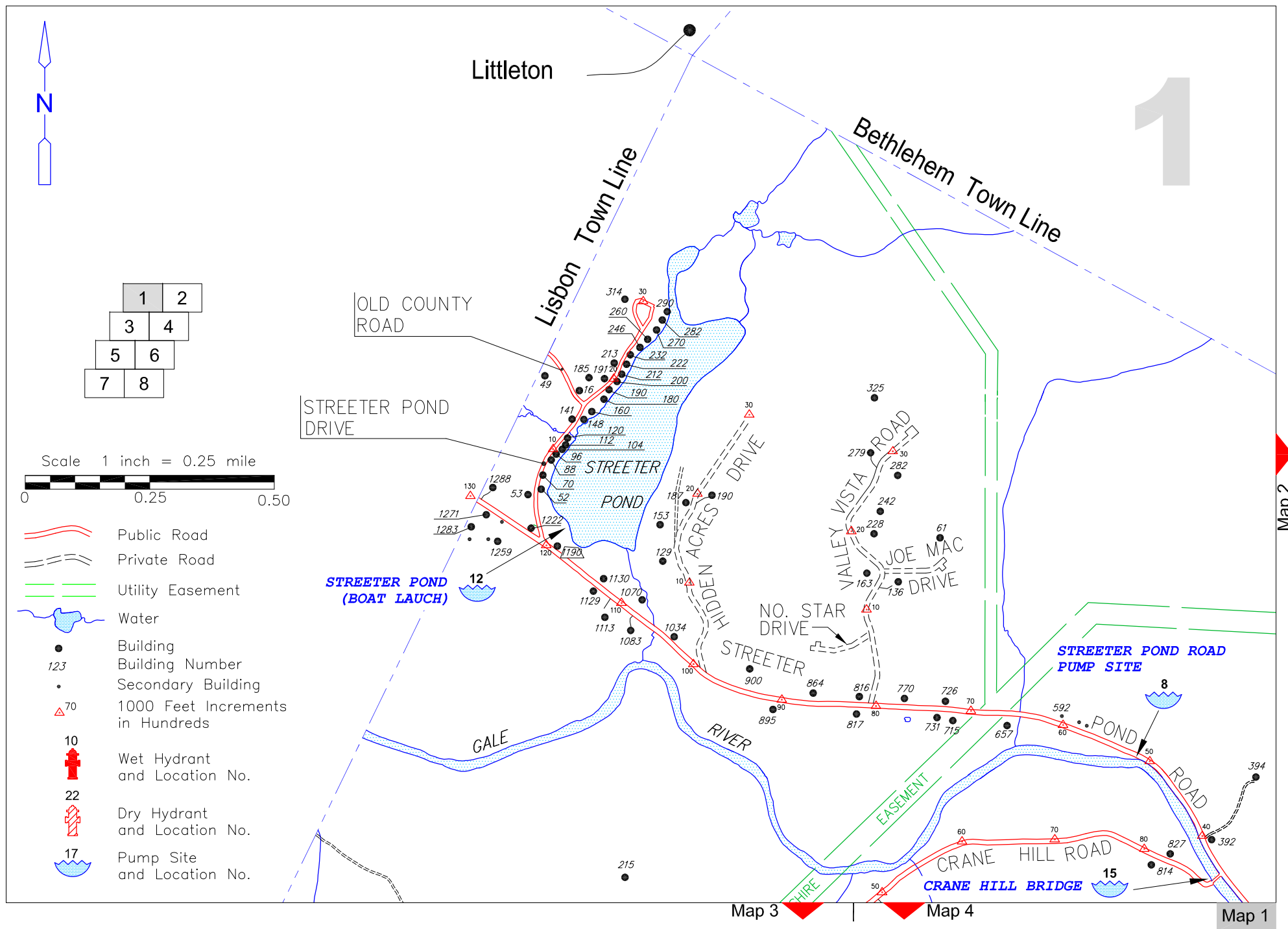
POTENTIAL SECONDARY WATER SOURCES

<i>Map Book Location No.</i>	<i>COMMON NAME</i>	<i>TYPE</i>	<i>Map Book Page</i>	<i>LOCATION</i>
8	Streeter Pond Rd	River	1	1/8 mile Past Turtle Ridge farm on Left
10	Lover's Lane Hydrant	Wet Hydrant	4	At intersection of Peckett's Cross & Lover's Lane (Currently Out of Service)
11	Creamery Pond	Stream	5	At intersection of Pearl Lake & Creamery Pond
14	Coffin Lane	Pond	4	At end of Coffin Lane off Lover's Land (Winter access questionable)
15	Crane Hill Bridge	River	1	Just before bridge on Streeter Pond and Crane Hill
17	Easton Road	Pond	6	Beside Horse Arena at Fall Wind Farm
18	Dickinson Pond	Pond	5	Just before #882 right on Pearl Lake Rd on right
19	Sunset Hill Golf Course	Pond	6	Past Sunset Hill on Rt before South Rd.
21	Gibbs Farm	Pond (Dry Hydrant)	8	75 yds Off Hadley Rd across from Gibbs #741 (To be constructed in 2009)
22	Ore Hill Properties	Pond (Dry Hydrant)	6	At end of new development Road off South Rd
23	Hilltop Farm (Glaessel)	Pond	3	50 yds off Lover's Lane right after Hilltop Farm
24	Grey Goose Estate	Pond	4	on Clark Rd off Blake Rd

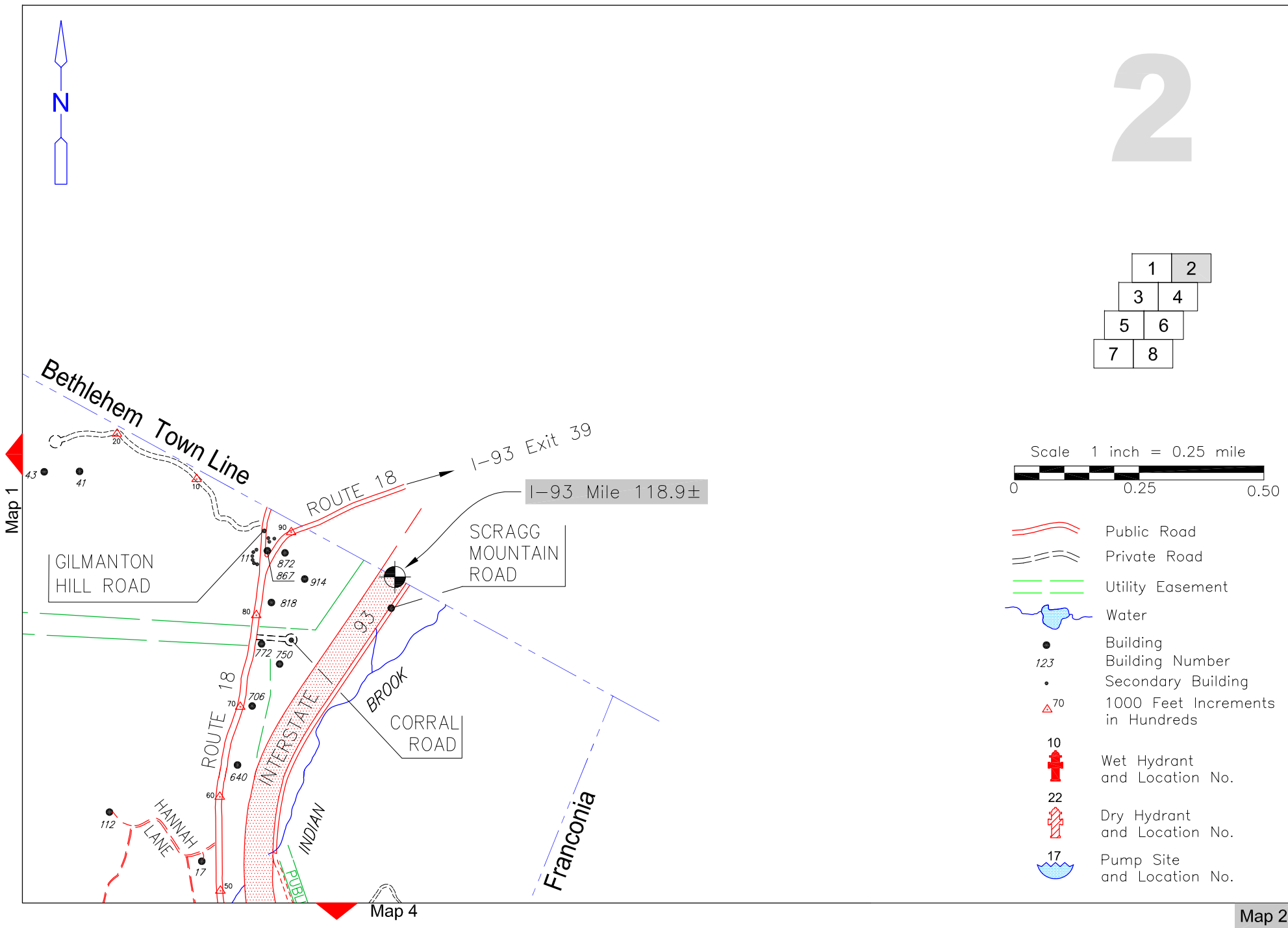
POTENTIAL FUTURE NEW PUMP SITES

<i>Map Book Location No.</i>	<i>COMMON NAME</i>	<i>TYPE</i>	<i>Map Book Page</i>	<i>LOCATION</i>
26	Thurston Residence	Pond (Dry Hydrant)	6	on South Road/ RT 117 Intersection

Caution! Structures and roads constructed after April 15, 2009 are not shown — See Key Map for General Notes.

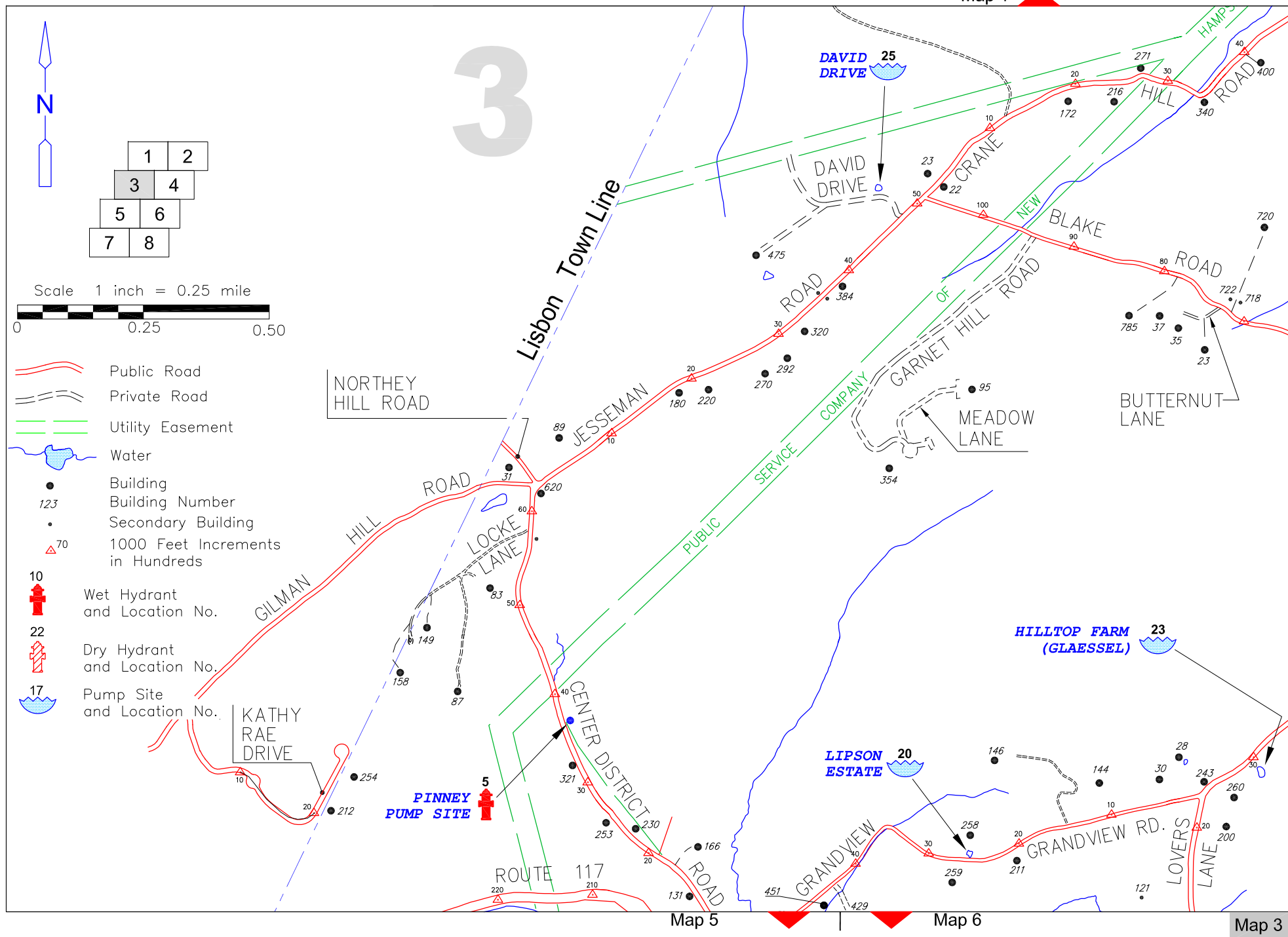


Caution! Structures and roads constructed after April 15, 2009 are not shown — See Key Map for General Notes.



Caution! Structures and roads constructed after April 15, 2009 are not shown — See Key Map for General Notes.

Map 1



Map 1

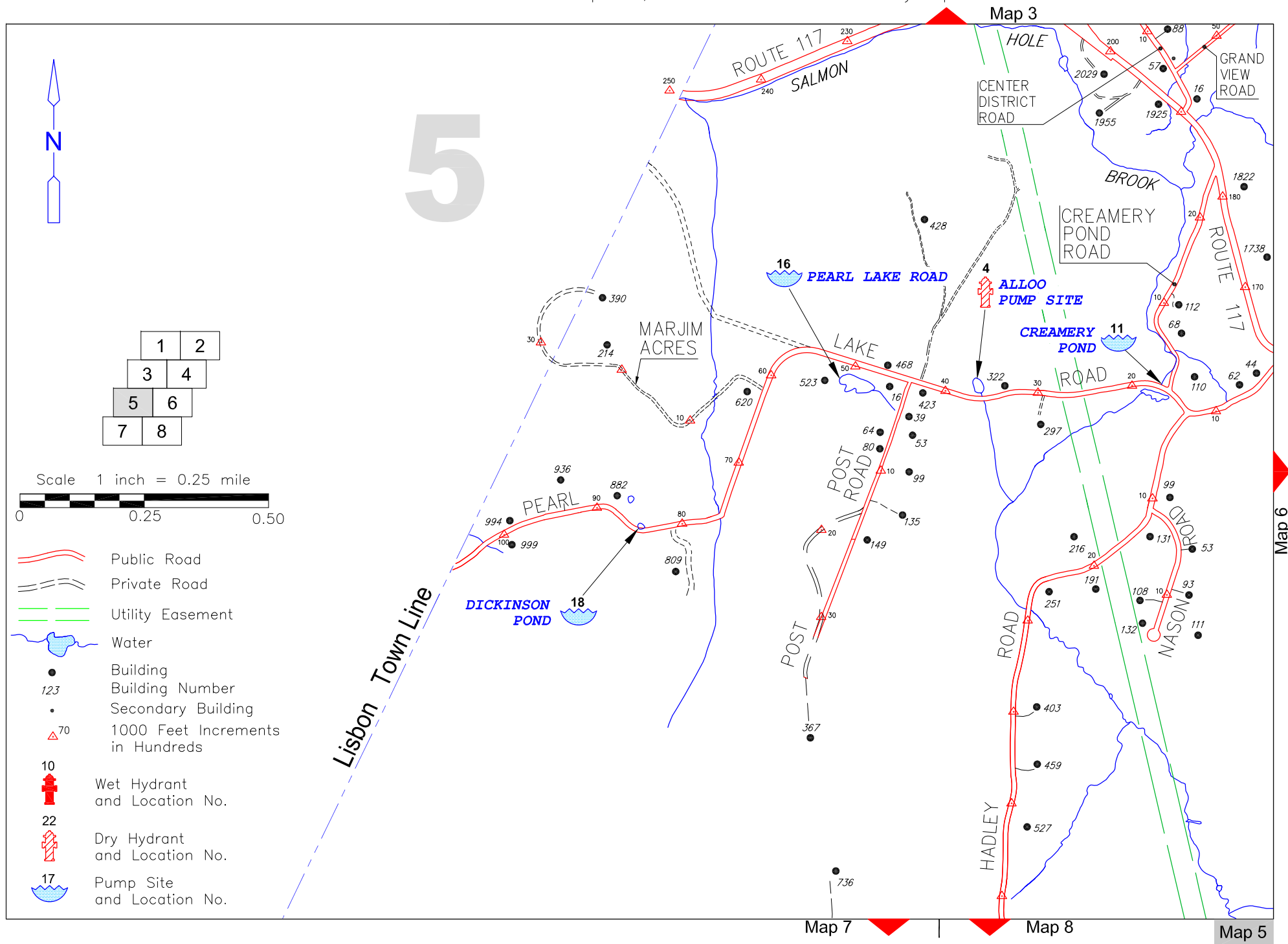
Map 2



Map 6

Map 4

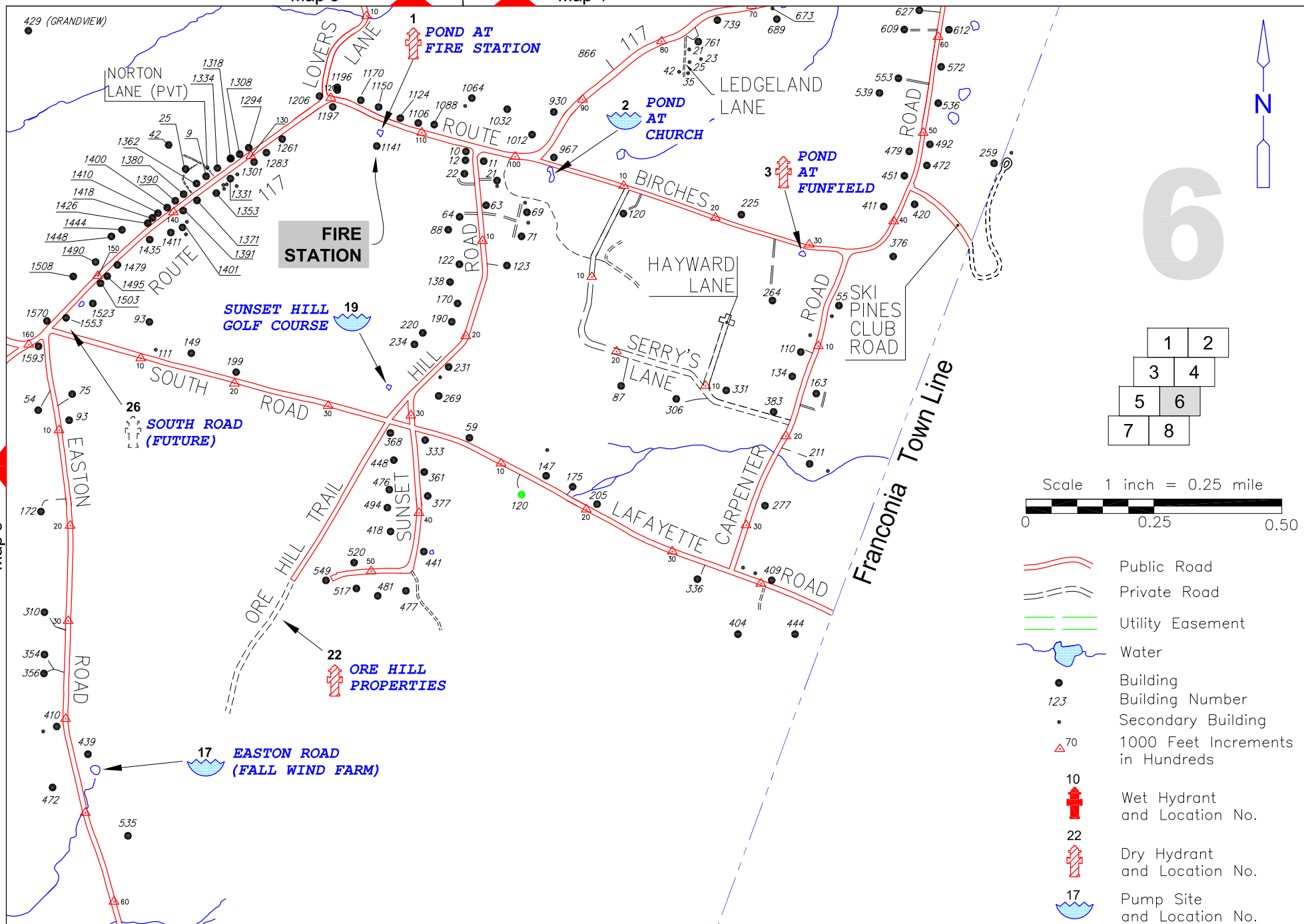
Caution! Structures and roads constructed after April 15, 2009 are not shown — See Key Map for General Notes.



Caution! Structures and roads constructed after April 15, 2009 are not shown – See Key Map for General Notes.

Map 3

Map 4



Map 8

Map 6

Caution! Structures and roads constructed after April 15, 2009 are not shown — See Key Map for General Notes.

Map 5

Map 6

